

Update on Front Range Passenger Rail , Joint Service Plan, and Station Location in Westminster

April 21, 2025

Purpose:

Receive a presentation and provide direction
regarding a Front Range Passenger Rail Station
Location in Westminster

Front Range Passenger Rail and Joint Service Plan

- FRPR Service Development Plan (SDP) underway
 - Expected completion: Q4 2025
 - Current concept omits a station in Westminster
- Joint Service Plan moving forward with:
 - Hybrid Service starting in 2029
 - Eight (8) stations (**incl. Westminster**)
 - Three (3) daily round trips
 - Funds coming from SB 230, SB 184, and RTD FISA

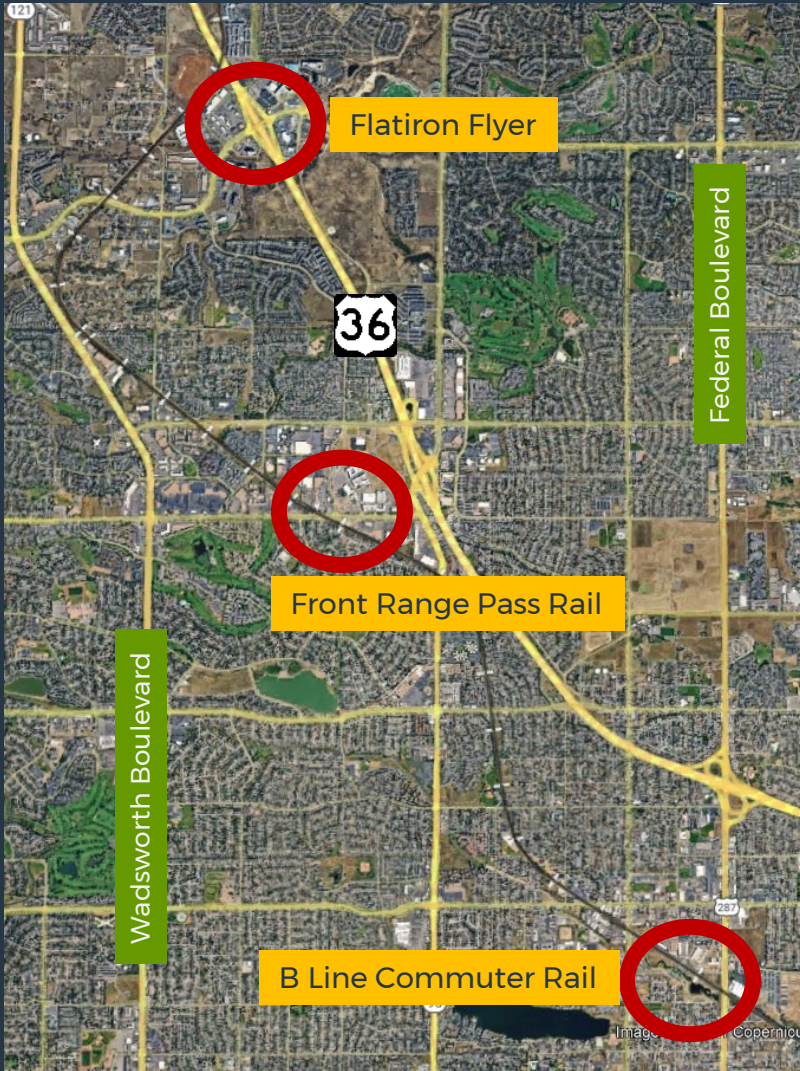
Joint Service Plan



- Merges elements from FRPR and RTD FasTracks
- Partnership between CDOT, CTIO, CTE, RTD, and FRPRD
- Stops in Westminster, Broomfield, and Louisville
- Service would be merged in Front Range Passenger Rail
- Dedicated sales tax ballot Item for FRPR in 2026

Regional Transit Connections

- B Line at Westminster Station
- Hybrid Joint Service at Downtown
- Flatiron Flyer at US 36/Church Ranch





Staff Recommendation: **Downtown Westminster**

- Existing Transit Connections
 - Route 92 – 92nd Avenue
 - Route 100 – Kipling Street
 - No rail service

*First time State has
acknowledged a station
in Westminster*





Downtown Westminster

PROS

- Downtown Development
- Long Time Expectation

CONS

- Station Spacing to Broomfield
- Higher Cost



Westminster Rail Station

- B Line Service
- Route 31 – Federal Boulevard
- Route 72 – 72nd Avenue
- Future Federal Blvd. Bus Rapid Transit (in 2030)





Westminster Station

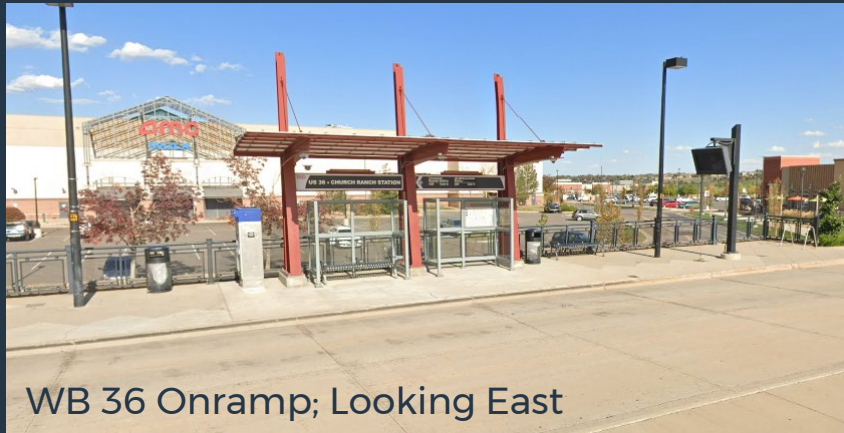
PROS

- Established Platform
- Well-Served by Bus Transit
- Future Federal Blvd. BRT

CONS

- What Happens to B Line?

Regional Connections: Promenade Flatiron Flyer Stop



WB 36 Onramp; Looking East

- Staff researching upgrades and improvements
 - Bicycle Storage
 - Improved Shelter
 - Better Multimodal Connections to Nearby Areas



Next Steps

- Stay Actively Involved with State
- Work to improve frequencies (headways) on B Line
- Improve experience at the Flatiron Flyer platforms at The Promenade
- Address First Last Mile (micromobility) connections